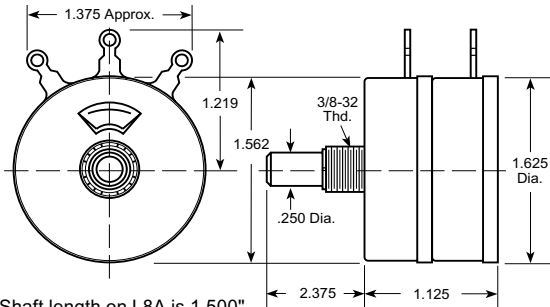


## L Pad Attenuator

Presents constant impedance to source (Amplifier). Used in audio circuits where output (Speaker) impedance is not critical



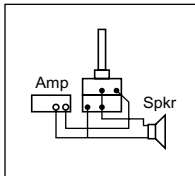
\* Shaft length on L8A is 1.500"

Power Rating: 4 Watts  
 Continuous Audio: 15 Watts  
 Dielectric Strength: Mounting plate to terminals, high pot test for 1 minute @ 900 VAC  
 Insulation Resistance: 1000 megohms minimum (50% relative humidity @ 25°C)  
 Operating Temperature: -55°C to +105°C  
 Operating Life: 10,000 cycles standard  
 Mechanical Rotation: 294° ±5°  
 Bushing Information: Thread: 3/8-32 NEF-2A  
 Contact Arm: Insulated from case  
 Terminals: Solder Lug

Ohms Rating	Catalog Number
4	L4
8	L8
8	L8A *
15	L15
50	L50
600	L600
2000	L2000

## MGL Pad Attenuator

Same as L Pad but with glass element for higher wattage

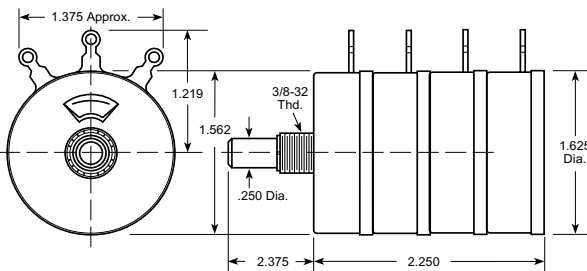


Power Rating: 12.5 Watts  
 Continuous Audio: 50 Watts  
 Dielectric Strength: Mounting plate to terminals, high pot test for 1 minute @ 900 VAC  
 Insulation Resistance: 1000 megohms minimum (50% relative humidity @ 25°C)  
 Operating Temperature: -55°C to +250°C  
 Operating Life: 10,000 cycles standard  
 Mechanical Rotation: 294° ±5°  
 Bushing Information: Thread: 3/8-32 NEF-2A  
 Contact Arm: Insulated from case  
 Terminals: Solder Lug

Ohms Rating	Catalog Number
8	MGL8
16	MGL16

## LL Pad Attenuator

Two L pads in tandem for Stereo Level Control

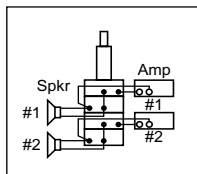


Power Rating: 4 Watts  
 Continuous Audio: 15 Watts  
 Dielectric Strength: Mounting plate to terminals, high pot test for 1 minute @ 900 VAC  
 Insulation Resistance: 1000 megohms minimum (50% relative humidity @ 25°C)  
 Operating Temperature: -55°C to +105°C  
 Operating Life: 10,000 cycles standard  
 Mechanical Rotation: 294° ±5°  
 Bushing Information: Thread: 3/8-32 NEF-2A  
 Contact Arm: Insulated from case  
 Terminals: Solder Lug

Ohms Rating	Catalog Number
4	LL4
8	LL8
16	LL16

## MGLL Pad Attenuator

Same as LL Pad but with glass element for higher wattage



Power Rating: 12.5 Watts  
 Continuous Audio: 50 Watts  
 Dielectric Strength: Mounting plate to terminals, high pot test for 1 minute @ 900 VAC  
 Insulation Resistance: 1000 megohms minimum (50% relative humidity @ 25°C)  
 Operating Temperature: -55°C to +105°C  
 Operating Life: 10,000 cycles standard  
 Mechanical Rotation: 294° ±5°  
 Bushing Information: Thread: 3/8-32 NEF-2A  
 Contact Arm: Insulated from case  
 Terminals: Solder Lug

Ohms Rating	Catalog Number
8	MGLL8

All Audio Attenuators are supplied with palnut and dial plate.

Dial Plate 395 for Mono and Dial Plate 495 for Stereo.

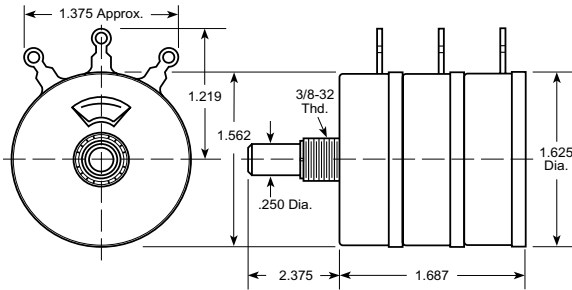
DuraCap International Incorporated [www.duracap.com](http://www.duracap.com)

P.O. Box 210, 59 Montclair Drive, Woodstock, Ontario, N4S 7W8, Canada

Telephone: (519) 539-4891

Fax: (519) 539-6684

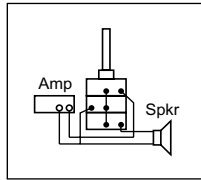
## T Pad Attenuator



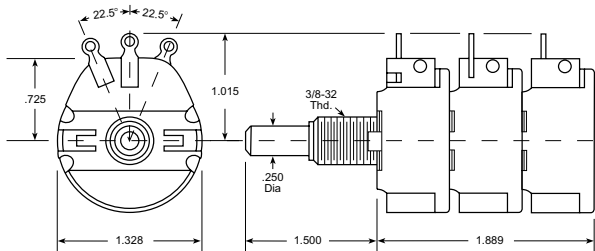
Presents constant impedance to both source (Amplifier) and output (Speaker)

Power Rating: 4 Watts  
 Continuous Audio: 15 Watts  
 Dielectric Strength: Mounting plate to terminals, high pot test for 1 minute @ 900 VAC  
 Insulation Resistance: 1000 megohms minimum. (50% relative humidity @ 25°C)  
 Operating Temperature: -55°C to +105°C  
 Operating Life: 10,000 cycles standard.  
 Mechanical Rotation: 294° ±5°  
 Bushing Information: Thread: 3/8-32 NEF-2A  
 Contact Arm: Insulated from case  
 Terminals: Solder Lug

Ohms Rating	Catalog Number
8	T8
50	T50
600	T600



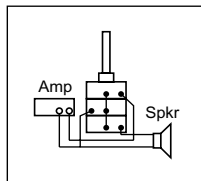
## RT Pad Attenuator



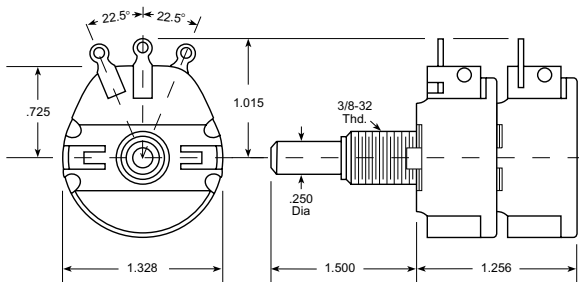
Presents constant impedance to both source (Amplifier) and output (Speaker)

Power Rating: 3 Watts  
 Continuous Audio: 10 Watts  
 Dielectric Strength: Mounting plate to terminals, high pot test for 1 minute @ 900 VAC  
 Insulation Resistance: 1000 megohms minimum (50% relative humidity @ 25°C)  
 Operating Temperature: -30°C to +105°C  
 Operating Life: 10,000 cycles standard  
 Mechanical Rotation: 300° ±5°  
 Bushing Information: Thread: 3/8-32 NEF-2A  
 Contact Arm: Insulated from case  
 Terminals: Solder Lug

Ohms Rating	Catalog Number
8	RT8



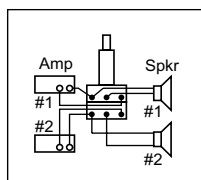
## Stereo Level Control



50 Ohm tandem dual level control for lower priced 4 and 8 Ohm stereo speakers

Power Rating: 3 Watts  
 Continuous Audio: 10 Watts  
 Dielectric Strength: Mounting plate to terminals, high pot test for 1 minute @ 900 VAC  
 Insulation Resistance: 1000 megohms minimum (50% relative humidity @ 25°C.)  
 Operating Temperature: -30°C to +105°C.  
 Operating Life: 10,000 cycles standard  
 Mechanical Rotation: 300° ±5°  
 Bushing Information: Thread: 3/8-32 NEF-2A  
 Contact Arm: Insulated from case  
 Terminals: Solder Lug

Ohms Rating	Catalog Number
50	RR50



All Audio Attenuators are supplied with palnut and dial plate.  
 Dial Plate 395 for Mono and Dial Plate 495 for Stereo.

DuraCap International Incorporated [www.duracap.com](http://www.duracap.com)  
 P.O. Box 210, 59 Montclair Drive, Woodstock, Ontario, N4S 7W8, Canada  
 Telephone: (519) 539-4891 Fax: (519) 539-6684